

PARTS LIST

[KS-FX460R]

[KS-FX463R]

* All printed circuit boards and its assemblies are not available as service parts.

Area suffix

E ----- Continental Europe

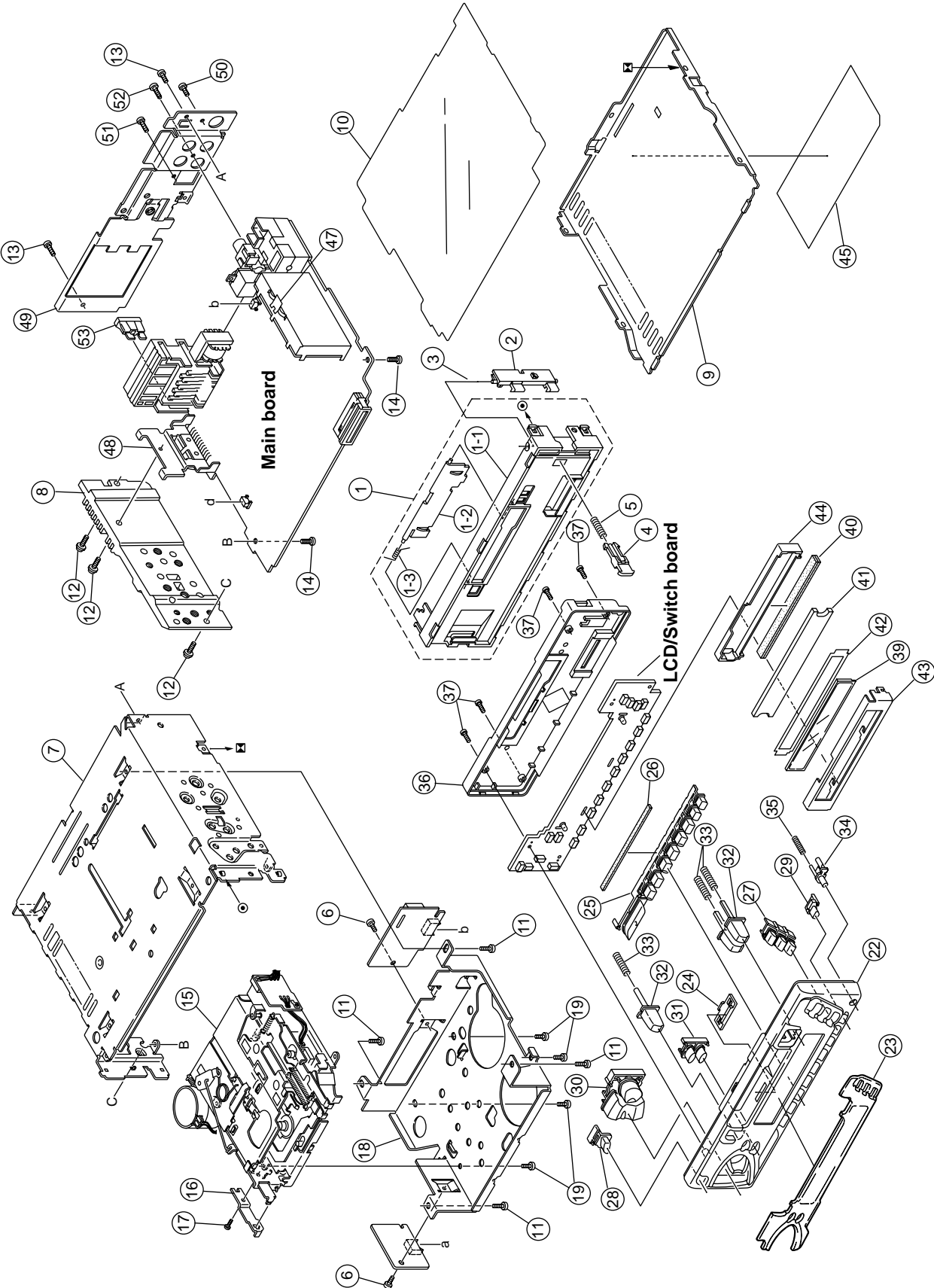
- Contents -

Exploded view of general assembly and parts list	3- 2
Cassette mechanism assembly and parts list	3- 5
Electrical parts list	3-10
Packing materials and accessories parts list	3-14

Exploded view of general assembly and parts list

Block No.

M	1	M	M
---	---	---	---



■ Parts list(General assembly)

Block No. M1MM

△	Item	Parts number	Parts name	Q'ty	Description	Area
	1	ZCKSFX12J-FB	F.PANEL ASSY	1		
	1-1	FSJC1055-001	FRONT CHASSIS	1		
	1-2	FSJC4003-027	CASSETTE LID	1		
	1-3	VKW4947-002	DOOR SPRING	1		
	2	FSKS3010-001	LOCK LEVER	1		
	3	FSKW4005-003	TORSION SPRING	1		
	4	FSXP3026-002	RLS KNOB	1		
	5	FSKW3002-004	COMP.SPRING	1		
	6	QYSDST2605Z	SCREW	2	PCB+MECHA	
	7	FSJC1029-015	TOP CHASSIS	1		
	8	FSMH3001-002	SIDE PANEL	1		
	9	FSKM3011-002	BOTTOM COVER	1		
	10	FSMA3004-003	INSULATOR	1		
	11	QYSDST2605Z	SCREW	4	CHASSIS+MECHA B	
	12	FSKZ4005-001	SCREW	3	CHASSIS+SIDE PA	
	13	QYSDST2604Z	SCREW	2	CHASSIS+REAR BK	
	14	QYSDST2606Z	SCREW	2	CHASSIS+MAIN PW	
	15	-----	CDS-363SJ1	1	MECHA W/O METAL	
	16	VKL7821-001	EJECT LEVER	1		
	17	QYSPSPT2625Z	MINI SCREW	1		
	18	FSKM2005-002	MECHA BRACKET	1		
	19	QYSDSP2604Z	SCREW	4	MECHA+M.BKT	
	22	FSJC1053-006	FRONT PANEL	1		
	23	FSJD3022-00G	FINDER LENS	1	KS-FX460R	
		FSJD3022-00H	FINDER LENS	1	KS-FX463R	
	24	FSJK3014-001	LIGHT LENS	1		
	25	FSXP2035-102	PRESET BUTTON	1		
	26	FSYH4036-031	SHEET	1	PRESET BTN	
	27	FSXP2034-037	D.FUNC BUTTON	1	FM/AM/CD-CH	
	28	FSXP3053-002	POWER BUTTON	1		
	29	FSXP4005-026	BBE BUTTON	1		
	30	FSXP2044-001	COMBO BUTTON	1		
	31	FSXP3068-002	PUSH BUTTON	1		
	32	FSXP4007-00A	BUTTON ASS'Y	1	FF/REW/EJECT	
	33	FSKW3002-003	COMP. SPRING	3	FOR REW BUTTON	
	34	FSXP3055-001	DETACH BUTTON	1		
	35	FSKW3002-012	COMP. SPRING	1	FOR DETACH BUTT	
	36	FSJC1054-001	REAR COVER	1		
	37	VKZ4777-001	MINI SCREW	4	F.PANEL+REAR CO	
	39	QLD0145-001	LCD MODULE	1		
	40	QNZ0439-001	RUBBER CONNE	1		
	41	FSJK3034-001	LCDLENS	1		
	42	FSYH4076-001	LIGHTING SHEET	1		
	43	FSYH3022-001	LCD CASE	1		
	44	FSKS3021-001	LENS CASE	1		
	45	GE30127-002A	NAME PLATE	1	KS-FX460R	
		GE30128-002A	NAME PLATE	1	KS-FX463R	
	47	VMA4652-001SS	EARTH PLATE	1		

■ Parts list(General assembly)

Block No. M1MM

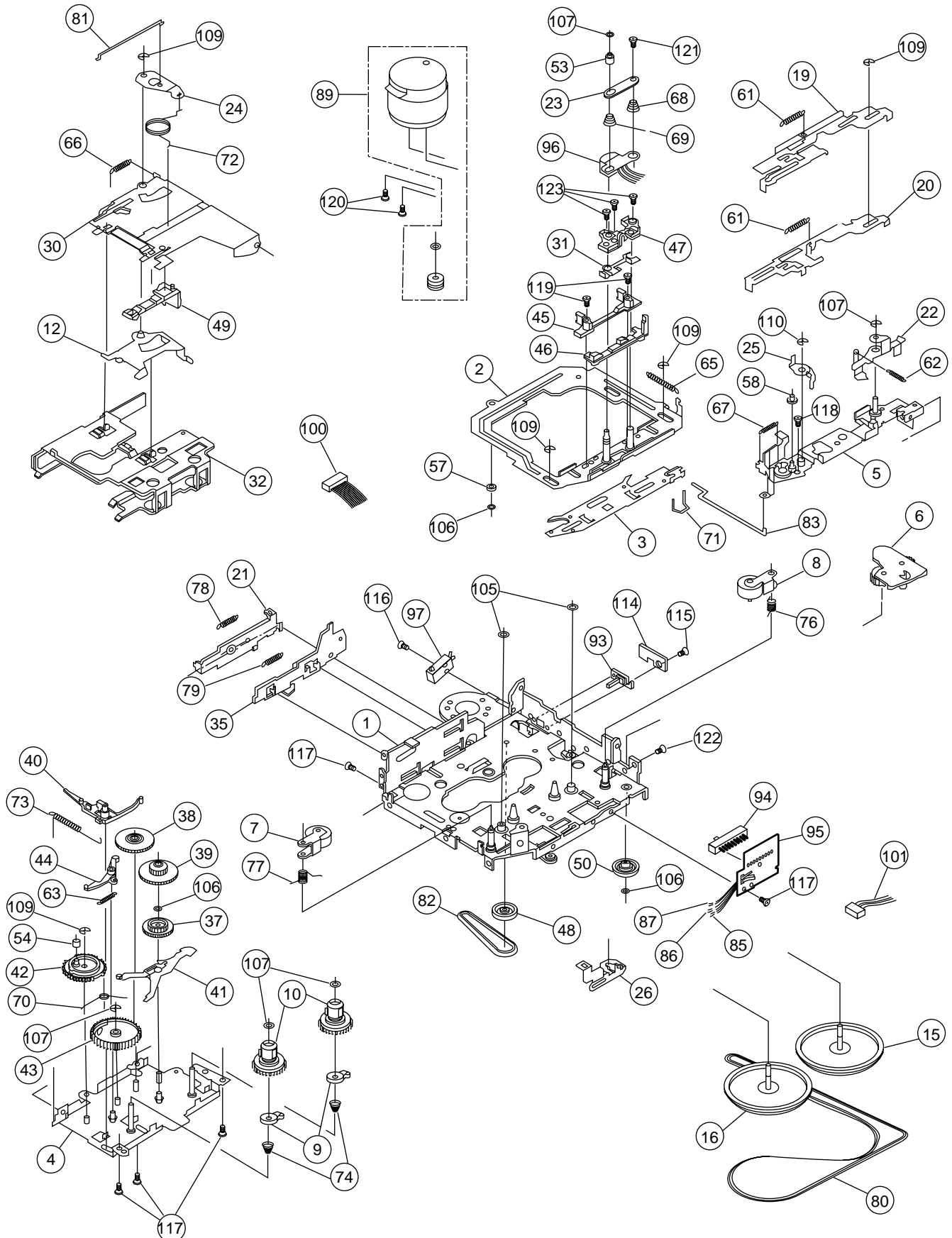
⚠	Item	Parts number	Parts name	Q'ty	Description	Area
	48	FSKL4018-00B	IC BRACKET	1		
	49	FSKM3012-011	REAR BRACKET	1		
	50	QYSDST2606Z	SCREW	1		
	51	QYSDST2606Z	SCREW	1		
	52	QYSDSF3006Z	SCREW	1		
⚠	53	QMFZ047-100-T	FUSE	1		

Cassette mechanism assembly and parts list

CDS-363SJ1

Block No.

M	2	M	M
---	---	---	---



■ Parts list(Cassette mechanism)

Block No. M2MM

△	Item	Parts number	Parts name	Q'ty	Description	Area
	1	X-0363-1001S	MAIN CHASSIS AS	1		
	2	X-0363-1002S	HEAD PLATE ASSY	1		
	3	X-0363-1004S	FR CONVERT ARM	1	(A)	
	4	X-0363-6001S	REEL BASE ASSY	1		
	5	X-0363-6007S	LEVER BRACKET	1	(HD)	
	6	X-0363-6003S	TU GEAR ARM ASS	1		
	7	X-0363-6004S	PINCH ARM(R) AS	1		
	8	X-0363-6005S	PINCH ARM(F) AS	1		
	9	X-0363-6006S	DETECTOR CAM AS	2	(V)	
	10	X-0363-2005S	REEL SPINDLE AS	2		
	12	X-0363-1019S	EJ.CAM LOCK ASS	1		
	15	1-0363-6010S	FLYWHEEL ASSY(F	1	CPL	
	16	1-0363-6011S	FLYWHEEL ASSY(R	1	CPL	
	19	1-0036-1065S	FF LEVER(JVC)	1		
	20	1-0036-1066S	REW LEVER(JVC)	1		
	21	1-0036-1007S	EJECT LEVER	1		
	22	1-0036-1013S	LOCK ARM	1		
	23	1-0036-1015S	SPG SUPPORT PLT	1		
	24	1-0036-1018S	CENTER PLATE	1		
	25	1-0036-1023S	CHANGE LEVER(B)	1		
	26	1-0036-1026S	FR ARM(B)	1		
	30	1-0138-1002S	CASSETTE HANGER	1	(X)	
	31	1-0138-1006S	ADJUSTER SHIM	1	(X)	
	32	1-0138-1010S	CASSETTE HOLDER	1	(X)	
	35	1-0363-1003S	EJECT CAM	1		
	37	1-0036-2001S	IDLE GEAR	1		
	38	1-0036-2003S	REDUCTION GEAR	1	(B)	
	39	1-0036-2004S	REDUCTION GEAR	1	(A)	
	40	1-0036-2007-5S	RATCHET	1		
	41	1-0036-2009S	SENSOR ARM	1		
	42	1-0036-2010S	SELECTOR GEAR	1		
	43	1-0036-2014S	DETECTOR GEAR	1		
	44	1-0038-2014S	GEAR LOCK ARM	1		
	45	1-0038-2018S	TAPE GUIDE	1		
	46	1-0363-2006S	ADJUSTER LINK(B	1		
	47	1-0138-2005-3S	ADJUSTER ARM	1	BLUE	
	48	1-0036-2005S	PULLEY GEAR	1		
	49	1-0032-2007S	TAPE HOOKER	1		
	50	1-0058-2021-5S	IDLE PULLEY(A)	1		
	53	1-0363-3018S	FF ROLLER	1		
	54	1-0036-3018S	COLLAR	1	(SELECTOR GEAR)	
	57	1-0363-3007S	HP ROLLER(A)	1		
	58	1-0363-3011S	PROGRAM ROLLER	1		
	61	1-0036-4001S	FF/REW LEVER SP	2		
	62	1-0036-4002S	LOCK LEVER SPG	1		
	63	1-0036-4003S	G.LOCK ARM SPG	1		
	65	1-0036-4006S	HEAD PLATE SPG	1		
	66	1-0036-4007S	EJ.CAM LOCK SPG	1		

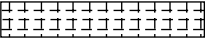


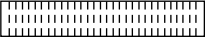

■ Parts list(Cassette mechanism)

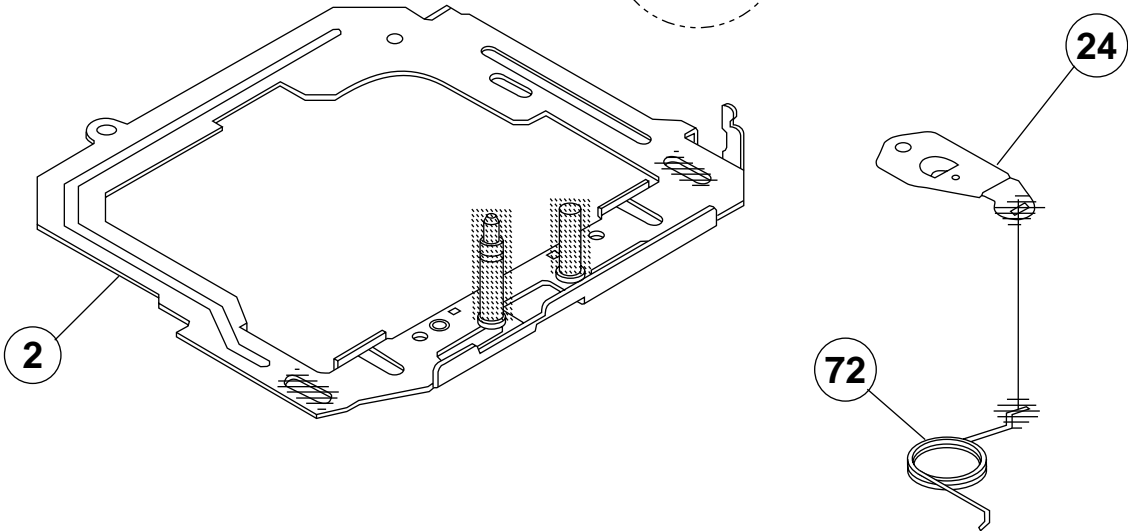
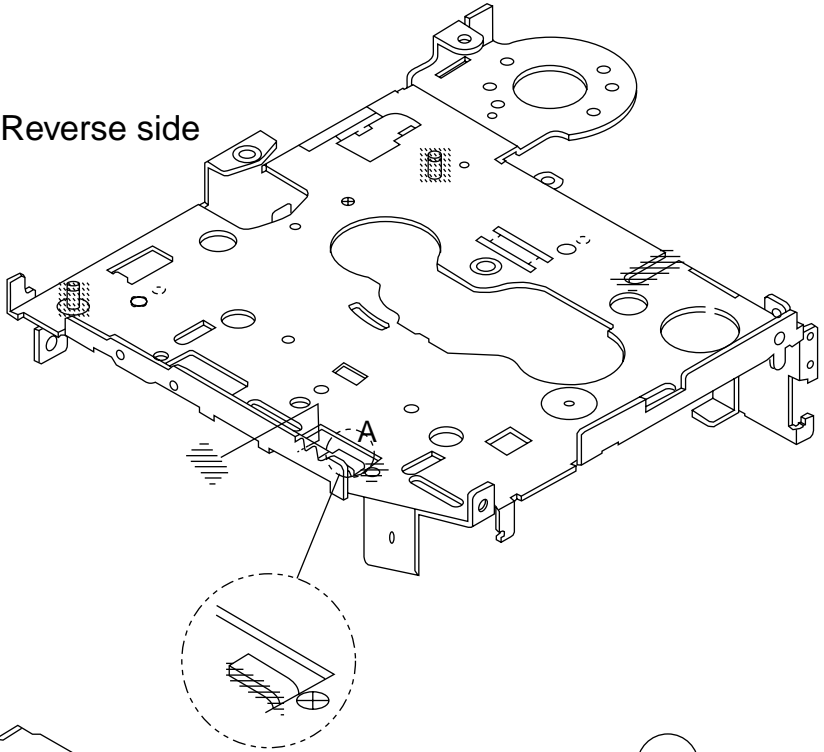
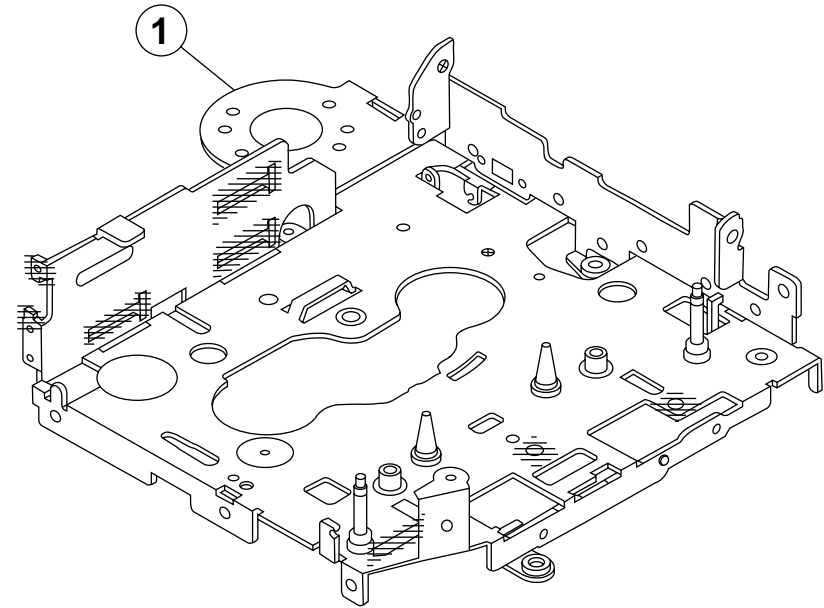
Block No. M2MM

△	Item	Parts number	Parts name	Q'ty	Description	Area
	67	1-0036-4008S	PROGRAM ARM SPG	1		
	68	1-0036-4010S	ADJUSTER ARM SP	1	(A)	
	69	1-0036-4011S	ADJUSTER ARM SP	1	(B)	
	70	1-0036-4015S	DASH SPG	1		
	71	1-0036-4017S	S.SELECT ARM SP	1		
	72	1-0036-4023S	CENTER PLT SP(B	1		
	73	1-0038-4014S	RATCHET SPG	1		
	74	1-0138-4001S	BACK TENSION SP	2		
	76	1-0363-4003S	PINCH ARM SPG F	1		
	77	1-0363-4004S	PINCH ARM SPG R	1		
	78	1-0363-4005S	EJECT LEVER SPG	1		
	79	1-0036-4005S	EJECT CAM SPG	1		
	80	1-0036-5020S	MAIN BELT(AL)	1		
	81	1-0363-5007S	RETURN LINK	1		
	82	1-0036-5001S	SUB BELT	1		
	83	1-0363-5003S	SELECTOR LINK(B	1		
	85	1-0036-7002S	WIRE(A)	1	BLACK 60MM	
	86	1-0036-7003S	WIRE(B)	1	RED 60MM	
	87	1-0036-7073S	WIRE(AL)	1	YELLOW 55MM	
	89	X-0363-7006S	MOTOR ASSY	1		
	93	1-0363-7001S	MUTE SWITCH	1		
	94	1-0363-7002S	SLIDE SWITCH	1		
	95	1-0363-7008S	SLIDE SW PWB	1		
	96	1-0036-7016S	HEAD	1		
	97	1-0363-7005S	POWER SWITCH	1		
	100	1-0036-7089S	6P WIRE ASY(JVC	1		
	101	1-0036-7088S	5P WIRE ASY(JVC	1		
	105	2-1816-0032-E8S	LMW-S	2		
	106	2-1812-0030-D2S	PSW-S	3		
	107	1-0036-5024S	PSW(REEL)B	5		
	109	2-1712-0050-16S	E RING	5		
	110	2-1712-5060-16S	E RING	1		
	114	1-0363-7015S	MUTE SW PWB	1		
	115	2-1331-7040-C2S	SCREW S	1		
	116	2-1331-7060-C2S	SCREW S	1		
	117	2-1382-0030-C2S	SCREW B	5		
	118	2-1332-0040-C1S	SCREW S	1		
	119	2-1032-0070-C2S	SCREW	2		
	120	2-1032-0025-C2S	SCREW	2		
	121	2-1012-0040-C2S	SCREW	1		
	122	2-1012-0030-F2S	SCREW	1		
	123	1-0138-5002S	AZIMUTH SCREW	3		

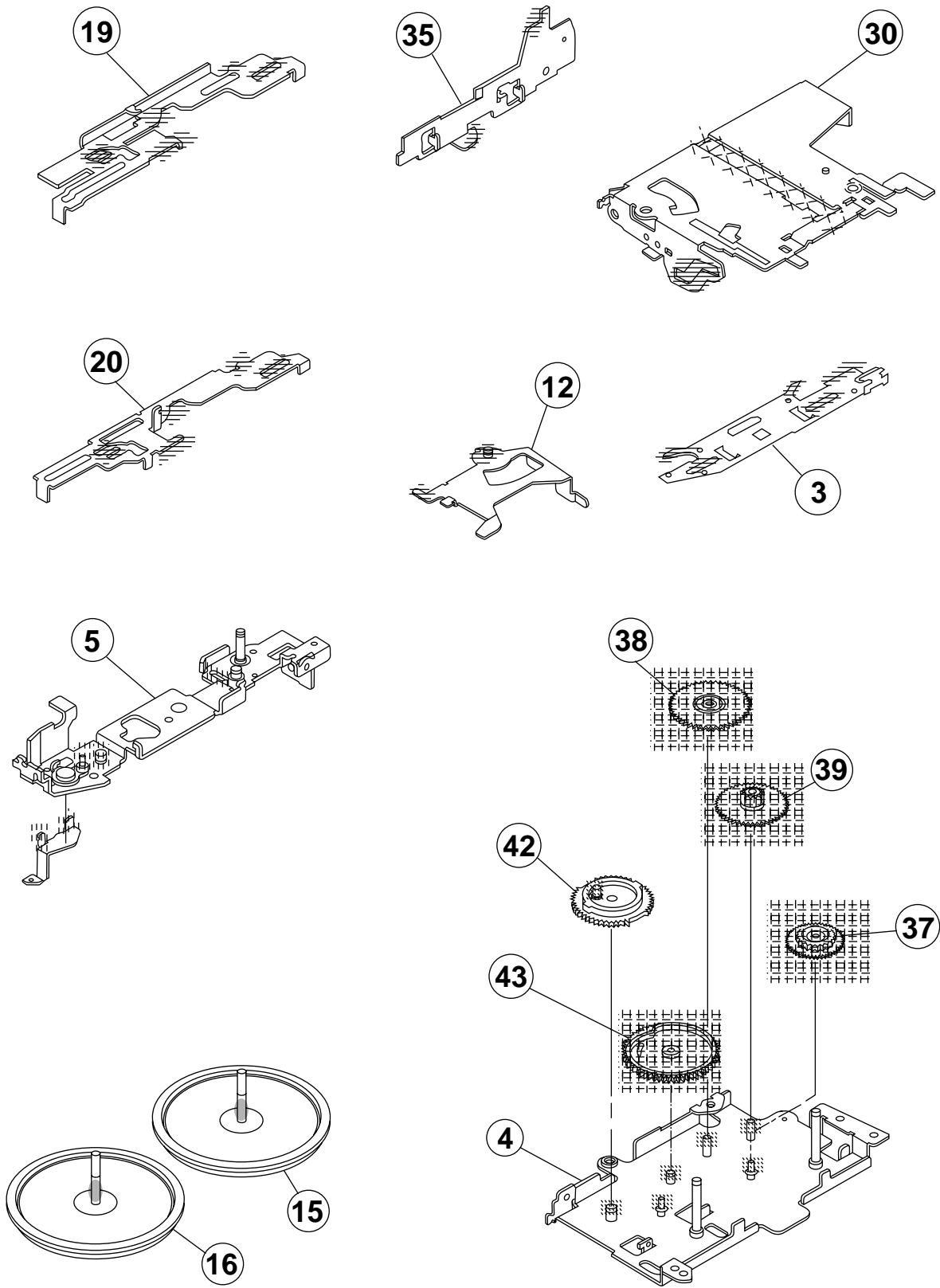
Grease point 1/2

Grease

	FL-942
	SW-902
	SW522B
	FG-84M
	C68



Grease point 2/2



■ Electrical parts list(Main board)

Block No. 01

△	Item	Parts number	Parts name	Remarks	Area
	C 1	QEKJ1HM-104Z	E CAPACITOR	.10MF 20% 50V	
	C 6	NCB21EK-563X	C CAPACITOR		
	C 7	NCB21EK-123X	C CAPACITOR		
	C 9	QER41AM-227	E CAPACITOR	220MF 20% 10V	
	C 17	NCS21HJ-151X	C CAPACITOR		
	C 18	QERF1HM-224Z	E CAPACITOR	.22MF 20% 50V	
	C 20	NCS21HJ-102X	C CAPACITOR		
	C 21	QEQF1HM-225Z	E CAPACITOR	2.2MF 20% 50V	
	C 24	NCB21EK-473X	C CAPACITOR		
	C 25	NCB21EK-104X	C CAPACITOR		
	C 30	NDC21HJ-470X	C CAPACITOR		
	C 101	NCS21HJ-821X	C CAPACITOR		
	C 102	QEK41HM-474	E CAPACITOR	.47MF 20% 50V	
	C 103	NCS21HJ-101X	C CAPACITOR		
	C 104	QEKJ0JM-476Z	E CAPACITOR	47MF 20% 6.3V	
	C 105	QFV61HJ-103Z	MF CAPACITOR	.010MF 5% 50V	
	C 111	QER41HM-105	E CAPACITOR	1.0MF 20% 50V	
	C 112	QER41HM-105	E CAPACITOR	1.0MF 20% 50V	
	C 113	QFLA1HJ-822Z	M CAPACITOR	8200PF 5% 50V	
	C 114	QFV61HJ-154Z	MF CAPACITOR	.15MF 5% 50V	
	C 115	QERF1HM-224Z	E CAPACITOR	.22MF 20% 50V	
	C 116	QFV61HJ-333Z	MF CAPACITOR	.033MF 5% 50V	
	C 117	QFLA1HJ-562Z	M CAPACITOR	5600PF 5% 50V	
	C 118	QER41HM-105	E CAPACITOR	1.0MF 20% 50V	
	C 119	QER41HM-105	E CAPACITOR	1.0MF 20% 50V	
	C 143	NCS21HJ-471X	C CAPACITOR		
	C 144	NCS21HJ-471X	C CAPACITOR		
	C 151	QER41HM-105	E CAPACITOR	1.0MF 20% 50V	
	C 152	NCB21HK-122X	C CAPACITOR		
	C 153	QER41HM-105	E CAPACITOR	1.0MF 20% 50V	
	C 154	NCB21HK-153X	C CAPACITOR		
	C 201	NCS21HJ-821X	C CAPACITOR		
	C 202	QERF1HM-474Z	E CAPACITOR	.47MF 20% 50V	
	C 203	NCS21HJ-101X	C CAPACITOR		
	C 204	QEKJ0JM-476Z	E CAPACITOR	47MF 20% 6.3V	
	C 205	QFV61HJ-103Z	MF CAPACITOR	.010MF 5% 50V	
	C 211	QER41HM-105	E CAPACITOR	1.0MF 20% 50V	
	C 212	QER41HM-105	E CAPACITOR	1.0MF 20% 50V	
	C 213	QFLA1HJ-822Z	M CAPACITOR	8200PF 5% 50V	
	C 214	QFV61HJ-154Z	MF CAPACITOR	.15MF 5% 50V	
	C 215	QERF1HM-224Z	E CAPACITOR	.22MF 20% 50V	
	C 216	QFV61HJ-333Z	MF CAPACITOR	.033MF 5% 50V	
	C 217	QFLA1HJ-562Z	M CAPACITOR	5600PF 5% 50V	
	C 218	QER41HM-105	E CAPACITOR	1.0MF 20% 50V	
	C 219	QER41HM-105	E CAPACITOR	1.0MF 20% 50V	
	C 243	NCS21HJ-471X	C CAPACITOR		
	C 244	NCS21HJ-471X	C CAPACITOR		
	C 251	QEKJ1HM-105Z	E CAPACITOR	1.0MF 20% 50V	
	C 252	NCB21HK-122X	C CAPACITOR		
	C 253	QER41HM-105	E CAPACITOR	1.0MF 20% 50V	
	C 254	NCB21HK-153X	C CAPACITOR		
	C 301	NCB21HK-331X	C.CAPA. C.M	SQ USE	
	C 302	NCB21HK-103X	C CAPACITOR	SQ USE	
	C 303	NCB21EK-472X	C CAPACITOR	MARKET CLAIM	
	C 304	NCB21EK-104X	C CAPACITOR	SQ USE	
	C 305	QEKJ1HM-225Z	E CAPACITOR	SQ USE	
	C 701	NDC21HJ-270X	C CAPACITOR		
	C 702	NDC21HJ-270X	C CAPACITOR		
	C 703	NCB21EK-104X	C CAPACITOR		
	C 704	NCB21EK-104X	C CAPACITOR		
	C 705	NCB21EK-103X	C CAPACITOR		
	C 707	NCB21EK-104X	C CAPACITOR		
	C 708	QER41AM-227	E CAPACITOR	220MF 20% 10V	

△	Item	Parts number	Parts name	Remarks	Area
	C 709	QERF0JM-107Z	E CAPACITOR	100MF 20% 6.3V	
	C 710	NCS21HJ-121X	C CAPACITOR		
	C 711	NCB21CK-224X	C CAPACITOR		
	C 712	NCB21HK-104X	C CAPACITOR		
	C 751	NCB21EK-104X	C CAPACITOR		
	C 761	NCB21EK-223X	C CAPACITOR		
	C 762	NCS21HJ-561X	C CAPACITOR		
	C 763	QEKJ1HM-225Z	E CAPACITOR	2.2MF 20% 50V	
	C 764	NDC21HJ-820X	C CAPACITOR		
	C 765	NDC21HJ-470X	C CAPACITOR		
	C 766	QER41CM-476	E CAPACITOR	47MF 20% 16V	
	C 767	NCB21HK-103X	C CAPACITOR		
	C 901	QEKJ1AM-107Z	E CAPACITOR	100MF 20% 10V	
	C 911	QER41CM-476	E CAPACITOR	47MF 20% 16V	
	C 912	QERF1CM-107Z	E CAPACITOR	100MF 20% 16V	
	C 913	QERF1CM-107Z	E CAPACITOR	100MF 20% 16V	
	C 932	NCB21EK-104X	C CAPACITOR		
	C 941	NCB21EK-104X	C CAPACITOR		
	C 942	NCB21EK-104X	C CAPACITOR		
	C 943	NCB21EK-104X	C CAPACITOR		
	C 944	NCB21EK-104X	C CAPACITOR		
	C 945	QEK41EM-475	E CAPACITOR	4.7MF 20% 25V	
	C 961	QETM1CM-228	E CAPACITOR	2200MF 20% 16V	
	C 962	QER41CM-106	E CAPACITOR	10MF 20% 16V	
	C 963	QER41CM-106	E CAPACITOR	10MF 20% 16V	
	C 964	QER41AM-227	E CAPACITOR	220MF 20% 10V	
	C 965	QER41AM-227	E CAPACITOR	220MF 20% 10V	
	C 966	QER41CM-106	E CAPACITOR	10MF 20% 16V	
	C 967	QER41CM-106	E CAPACITOR	10MF 20% 16V	
	C 969	NCB21EK-473X	C CAPACITOR		
	C 970	NCB21EK-473X	C CAPACITOR		
	C 971	NCB21EK-104X	C CAPACITOR		
	C 977	QER41AM-227	E CAPACITOR	220MF 20% 10V	
	C 978	QEK41EM-475	E CAPACITOR	4.7MF 20% 25V	
	C 979	QEK41CM-106	E CAPACITOR	10MF 20% 16V	
	C 980	NCB21HK-473X	C CAPACITOR		
	C 981	QEKJ0JM-107Z	E CAPACITOR	100MF 20% 6.3V	
	C 982	QEK41CM-106	E CAPACITOR	10MF 20% 16V	
	C 984	QER41AM-227	E CAPACITOR	220MF 20% 10V	
	CJ701	VMC0334-001	CONNECTOR		
	CJ901	QGA2002C1-05	CONNECTOR		
	CJ902	QGA2002F1-06	CONNECTOR		
	CN901	QGB1214J1-06S	CONNECTOR		
	CN902	QGB1214J1-06S	CONNECTOR		
	CP901	QGB1214K1-06S	CONNECTOR		
	CP902	QGB1214K1-06S	CONNECTOR		
	CP961	QNZ0112-001	CAR CONNECTOR		
	D 1	1SS119-041	SI DIODE		
	D 2	1SS119-041	SI DIODE		
	D 3	MA152WK-X	SI DIODE		
	D 5	1SS119-041	SI DIODE		
	D 6	MTZJ9.1C-T2	Z DIODE I/M		
	D 701	1SS119-041	SI DIODE		
	D 741	1SS119-041	SI DIODE		
	D 742	1SS119-041	SI DIODE		
	D 744	DSK10C-T1	DIODE		
	D 776	DSK10C-T1	DIODE		
	D 931	MA152WA-X	DIODE		
	D 951	1SS133-T2	SI DIODE		
	D 961	1N5401-TU-15	DIODE		
	D 963	MA152WA-X	DIODE		
	D 965	DSK10C-T1	DIODE		
	D 966	DSK10C-T1	DIODE		

■ Electrical parts list(Main board)

Block No. 01

△	Item	Parts number	Parts name	Remarks	Area	△	Item	Parts number	Parts name	Remarks	Area
	D 977	MA152WK-X	SI DIODE				R 30	NRS181J-8R2X	MG RESISTOR		
	D 978	MTZJ11B-T2	ZENER DIODE				R 32	NRSA02J-0R0X	MG RESISTOR		
	D 980	MA152WA-X	DIODE				R 34	NRSA02J-223X	MG RESISTOR		
	D 981	MA152WA-X	DIODE				R 101	NRSA02J-153X	MG RESISTOR		
	D 982	MA152WK-X	SI DIODE				R 103	NRSA02J-101X	MG RESISTOR		
	IC701	UPD178016AGC555	IC				R 104	NRSA02J-334X	MG RESISTOR		
	IC751	HD74HC126FP-X	IC				R 112	NRSA02J-223X	MG RESISTOR		
	IC761	SAA6579T-X	IC				R 113	NRSA02J-222X	MG RESISTOR		
	IC901	UPC1228HA	IC				R 132	NRSA02J-222X	MG RESISTOR		
	IC911	TEA6320T-X	IC				R 135	NRSA02J-101X	MG RESISTOR		
	IC941	HA13158A	IC				R 136	NRSA02J-102X	MG RESISTOR		
	IC961	AN80T05LF	IC				R 141	NRSA02J-153X	MG RESISTOR		
	J 1	QNZ0009-001	CAR ANT JACK				R 142	NRSA02J-153X	MG RESISTOR		
	J 751	QNZ0095-001	CONNECTOR				R 143	NRSA02J-393X	MG RESISTOR		
	J 931	QNN0183-001	PIN JACK				R 144	NRSA02J-393X	MG RESISTOR		
	L 1	QQL231K-4R7Y	INDUCTOR				R 151	NRSA02J-103X	MG RESISTOR		
	L 701	QQL231K-470Y	INDUCTOR				R 152	NRSA02J-223X	MG RESISTOR		
	L 961	QQR0528-002	CHOKE COIL				R 153	NRSA02J-472X	MG RESISTOR		
	Q 1	DTC114EKA-X	TR				R 201	NRSA02J-153X	MG RESISTOR		
	Q 2	DTC114EKA-X	TR				R 203	NRSA02J-101X	MG RESISTOR		
	Q 3	2SC2412K/R/-X	TRANSISTOR				R 204	NRSA02J-334X	MG RESISTOR		
	Q 4	DTA114EKA-X	DIGITAL.TRANSIS				R 212	NRSA02J-223X	MG RESISTOR		
	Q 5	2SA1037AK/RS/-X	TRANSISTOR				R 213	NRSA02J-222X	MG RESISTOR		
	Q 6	2SA1037AK/RS/-X	TRANSISTOR				R 232	NRSA02J-222X	MG RESISTOR		
	Q 7	2SC3661-X	TRANSISTOR				R 235	NRSA02J-101X	MG RESISTOR		
	Q 10	2SC3661-X	TRANSISTOR				R 236	NRSA02J-102X	MG RESISTOR		
	Q 11	2SC2412K/R/-X	TRANSISTOR				R 241	NRSA02J-153X	MG RESISTOR		
	Q 12	2SC2412K/R/-X	TRANSISTOR				R 242	NRSA02J-153X	MG RESISTOR		
	Q 131	2SC2412K/R/-X	TRANSISTOR				R 243	NRSA02J-393X	MG RESISTOR		
	Q 151	2SC2412K/R/-X	TRANSISTOR				R 244	NRSA02J-393X	MG RESISTOR		
	Q 231	2SC2412K/R/-X	TRANSISTOR				R 251	NRSA02J-103X	MG RESISTOR		
	Q 251	2SC2412K/R/-X	TRANSISTOR				R 252	NRSA02J-223X	MG RESISTOR		
	Q 301	2SD601A/R/-X	TRANSISTOR	SQ USE			R 253	NRSA02J-472X	MG RESISTOR		
	Q 302	2SD601A/R/-X	TRANSISTOR	SQ USE			R 301	NRSA02J-473X	MG RESISTOR	SQ USE	
	Q 701	2SC2412K/R/-X	TRANSISTOR				R 302	NRSA02J-473X	MG RESISTOR	SQ USE	
	Q 951	DTA114EKA-X	DIGITAL.TRANSIS				R 303	NRSA02J-103X	MG RESISTOR	SQ USE	
	Q 959	DTC114EKA-X	TR				R 304	NRSA02J-222X	MG RESISTOR	SQ USE	
	Q 960	2SA1037AK/RS/-X	TRANSISTOR				R 305	NRSA02J-153X	MG RESISTOR	SQ USE	
	Q 961	2SA1037AK/RS/-X	TRANSISTOR				R 306	NRSA02J-471X	MG RESISTOR	SQ USE	
	Q 962	2SB1322/RS/-T	TRANSISTOR				R 307	NRSA02J-103X	MG RESISTOR	SQ USE	
	Q 963	2SA1037AK/RS/-X	TRANSISTOR				R 701	NRSA02J-271X	MG RESISTOR		
	Q 964	DTC114EKA-X	TR				R 702	NRS181J-271X	MG RESISTOR		
	Q 965	DTC114EKA-X	TR				R 703	NRS181J-271X	MG RESISTOR		
	Q 966	DTC114EKA-X	TR				R 704	NRSA02J-271X	MG RESISTOR		
	Q 967	2SA1037AK/RS/-X	TRANSISTOR				R 705	NRSA02J-103X	MG RESISTOR		
	Q 978	DTC114EKA-X	TR				R 706	NRSA02J-473X	MG RESISTOR		
	Q 979	DTA114EKA-X	DIGITAL.TRANSIS				R 708	NRSA02J-104X	MG RESISTOR		
	Q 980	DTC114EKA-X	TR				R 709	NRSA02J-104X	MG RESISTOR		
	Q 981	DTA114EKA-X	DIGITAL.TRANSIS				R 710	NRS181J-472X	MG RESISTOR		
	R 3	NRSA02J-472X	MG RESISTOR				R 711	NRSA02J-391X	MG RESISTOR		
	R 4	NRSA02J-473X	MG RESISTOR				R 712	NRS181J-103X	MG RESISTOR		
	R 5	NRSA02J-332X	MG RESISTOR				R 713	NRSA02J-103X	MG RESISTOR		
	R 7	NRSA02J-473X	MG RESISTOR				R 715	NRS181J-103X	MG RESISTOR		
	R 8	NRSA02J-472X	MG RESISTOR				R 716	NRS181J-103X	MG RESISTOR		
	R 9	NRSA02J-102X	MG RESISTOR				R 717	NRS181J-103X	MG RESISTOR		
	R 10	NRSA02J-392X	MG RESISTOR				R 718	NRS181J-472X	MG RESISTOR		
	R 12	NRSA02J-102X	MG RESISTOR				R 719	NRSA02J-472X	MG RESISTOR		
	R 14	NRS181J-471X	MG RESISTOR				R 720	NRSA02J-472X	MG RESISTOR		
	R 24	NRSA02J-102X	MG RESISTOR				R 721	NRS181J-472X	MG RESISTOR		
	R 25	NRSA02J-102X	MG RESISTOR				R 722	NRSA02J-472X	MG RESISTOR		
	R 26	NRSA02J-103X	MG RESISTOR				R 723	NRS181J-472X	MG RESISTOR		
	R 27	NRSA02J-102X	MG RESISTOR				R 724	NRS181J-472X	MG RESISTOR		
	R 29	NRSA02J-152X	MG RESISTOR				R 725	NRS181J-472X	MG RESISTOR		

■ Electrical parts list(Main board)

Block No. 01

△	Item	Parts number	Parts name	Remarks	Area
	R 726	NRS181J-472X	MG RESISTOR		
	R 727	NRSA02J-472X	MG RESISTOR		
	R 733	NRS181J-472X	MG RESISTOR		
	R 734	NRSA02J-472X	MG RESISTOR		
	R 736	NRSA02J-103X	MG RESISTOR		
	R 737	NRSA02J-473X	MG RESISTOR		
	R 738	NRSA02J-473X	MG RESISTOR		
	R 740	NRSA02J-473X	MG RESISTOR		
	R 743	NRSA02J-103X	MG RESISTOR	SQ USE	
	R 746	NRSA02J-473X	MG RESISTOR		
	R 748	NRSA02J-473X	MG RESISTOR	INTI. RES.	
	R 750	NRSA02J-473X	MG RESISTOR	INTI. RES.	
	R 751	NRSA02J-104X	MG RESISTOR		
	R 752	NRSA02J-334X	MG RESISTOR		
	R 753	NRSA02J-223X	MG RESISTOR		
	R 754	NRSA02J-101X	MG RESISTOR		
	R 755	NRSA02J-103X	MG RESISTOR		
	R 756	NRSA02J-104X	MG RESISTOR		
	R 757	NRSA02J-104X	MG RESISTOR		
	R 758	NRSA02J-101X	MG RESISTOR		
	R 759	NRSA02J-334X	MG RESISTOR		
	R 761	NRSA02J-222X	MG RESISTOR		
	R 762	NRSA02J-222X	MG RESISTOR		
	R 763	NRSA02J-222X	MG RESISTOR		
	R 773	NRSA02J-473X	MG RESISTOR		
	R 901	QRE141J-121Y	C RESISTOR	120 5% 1/4W	
	R 911	NRSA02J-271X	MG RESISTOR		
	R 912	NRSA02J-271X	MG RESISTOR		
	R 913	NRS181J-100X	MG RESISTOR		
	R 941	NRSA02J-473X	MG RESISTOR		
	R 959	NRSA02J-222X	MG RESISTOR		
	R 960	NRSA02J-273X	MG RESISTOR		
	R 961	QRE141J-470Y	C RESISTOR	47 5% 1/4W	
	R 962	NRSA02J-682X	MG RESISTOR		
	R 963	NRS181J-123X	MG RESISTOR		
	R 966	NRSA02J-473X	MG RESISTOR		
	R 967	NRSA02J-222X	MG RESISTOR		
	R 969	NRS181J-222X	MG RESISTOR		
	R 970	NRS181J-473X	MG RESISTOR		
	R 974	NRSA02J-123X	MG RESISTOR		
	R 975	NRSA02J-243X	MG RESISTOR		
	R 977	NRS181J-181X	MG RESISTOR		
	R 978	NRSA02J-473X	MG RESISTOR		
	R 979	NRSA02J-473X	MG RESISTOR		
	R 980	NRSA02J-102X	MG RESISTOR		
	TU 1	QAU0156-002	TUNER		
	X 701	QAX0406-002Z	CRYSTAL		
	X 761	QAX0263-001Z	CRYSTAL		

■ Electrical parts list(LCD&key control board)

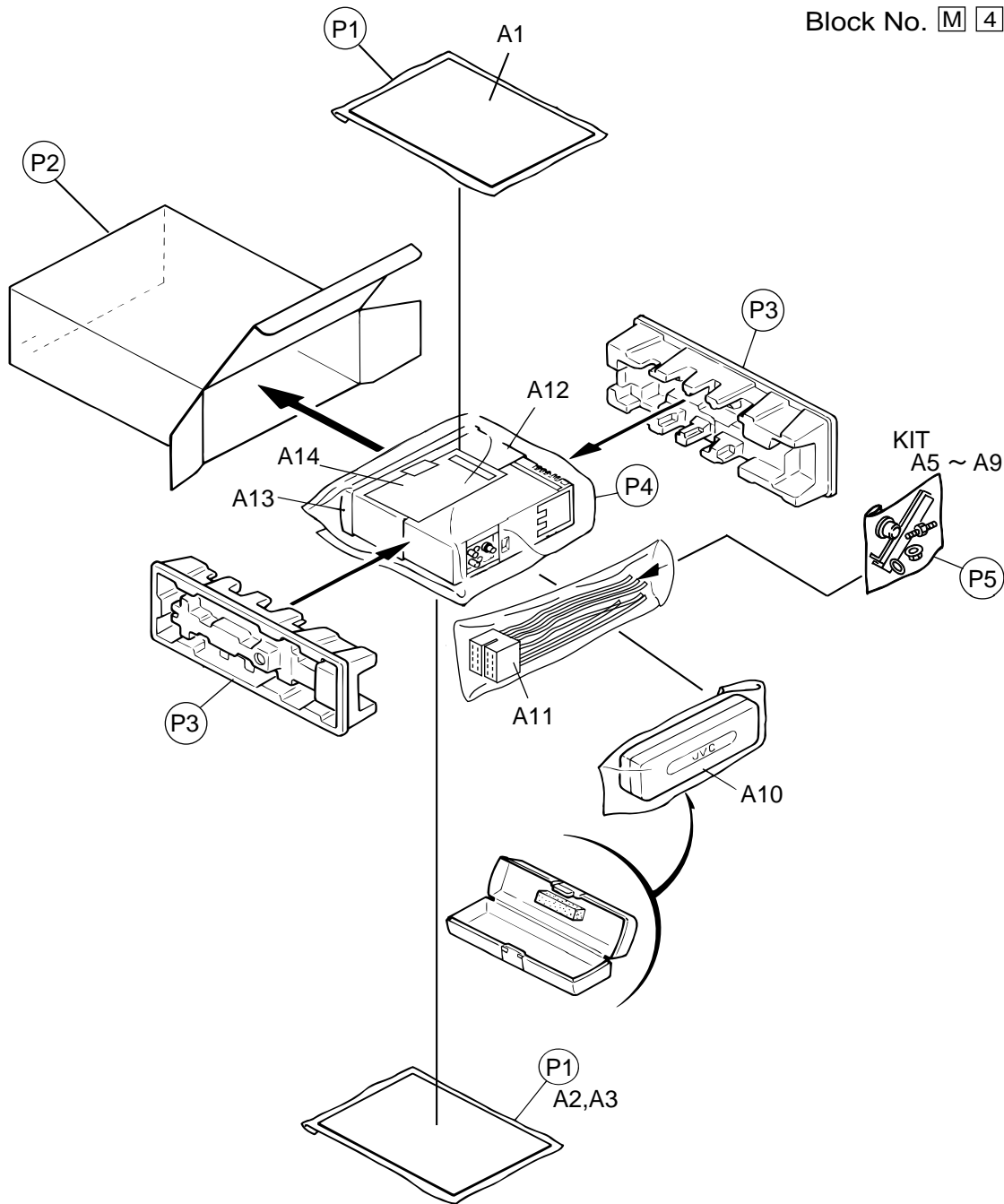
Block No. 02

△	Item	Parts number	Parts name	Remarks	Area
	C 651	NCB21EK-103X	C CAPACITOR		
	C 652	NBE20JM-475X	TS E CAPACITOR		
	C 653	NCB21HK-681X	C CAPACITOR		
	CP701	VMC0335-001	CONNECTOR		
	D 601	LNJ308G81/1-3/X	L.E.D.	KS-FX463R	
	D 601	SML-310DT/KL/-X	L.E.D.	KS-FX460R	
	D 602	SML-310DT/KL/-X	L.E.D.	KS-FX460R	
	D 602	LNJ308G81/1-3/X	L.E.D.	KS-FX463R	
	D 603	LNJ308G81/1-3/X	L.E.D.	KS-FX463R	
	D 603	SML-310DT/KL/-X	L.E.D.	KS-FX460R	
	D 604	SML-310DT/KL/-X	L.E.D.	KS-FX460R	
	D 604	LNJ308G81/1-3/X	L.E.D.	KS-FX463R	
	D 605	LNJ308G81/1-3/X	L.E.D.	KS-FX463R	
	D 605	SML-310DT/KL/-X	L.E.D.	KS-FX460R	
	D 608	LNJ308G81/1-3/X	L.E.D.	KS-FX463R	
	D 609	LNJ308G81/1-3/X	L.E.D.	KS-FX463R	
	D 609	SML-310DT/KL/-X	L.E.D.	KS-FX460R	
	D 610	SML-310DT/KL/-X	L.E.D.	KS-FX460R	
	D 610	LNJ308G81/1-3/X	L.E.D.	KS-FX463R	
	D 611	LNJ308G81/1-3/X	L.E.D.	KS-FX463R	
	D 611	SML-310DT/KL/-X	L.E.D.	KS-FX460R	
	D 612	SML-310DT/KL/-X	L.E.D.	KS-FX460R	
	D 612	LNJ308G81/1-3/X	L.E.D.	KS-FX463R	
	D 613	LNJ308G81/1-3/X	L.E.D.	KS-FX463R	
	D 613	SML-310DT/KL/-X	L.E.D.	KS-FX460R	
	D 614	SML-310DT/KL/-X	L.E.D.	KS-FX460R	
	D 614	LNJ308G81/1-3/X	L.E.D.	KS-FX463R	
	D 615	LNJ308G81/1-3/X	L.E.D.	KS-FX463R	
	D 615	SML-310DT/KL/-X	L.E.D.	KS-FX460R	
	D 616	LNJ308G81/1-3/X	L.E.D.	KS-FX463R	
	D 616	SML-310DT/KL/-X	L.E.D.	KS-FX460R	
	D 618	SML-310DT/KL/-X	L.E.D.	KS-FX460R	
	D 618	LNJ308G81/1-3/X	L.E.D.	KS-FX463R	
	D 619	LNJ308G81/1-3/X	L.E.D.	KS-FX463R	
	D 619	SML-310DT/KL/-X	L.E.D.	KS-FX460R	
	D 620	SML-310DT/KL/-X	L.E.D.	KS-FX460R	
	D 620	LNJ308G81/1-3/X	L.E.D.	KS-FX463R	
	D 621	LNJ308G81/1-3/X	L.E.D.	KS-FX463R	
	D 621	SML-310DT/KL/-X	L.E.D.	KS-FX460R	
	D 622	SML-310DT/KL/-X	L.E.D.	KS-FX460R	
	D 622	LNJ308G81/1-3/X	L.E.D.	KS-FX463R	
	D 623	SML-310LT/MN/-X	L.E.D.		
	D 624	LNJ308G81/1-3/X	L.E.D.	KS-FX463R	
	D 624	SML-310DT/KL/-X	L.E.D.	KS-FX460R	
	D 654	MA152WK-X	SI DIODE		
	IC651	LC75823W	IC		
	PL601	QLL0092-001	PILOT LAMP	KS-FX463R	
	PL601	QLL0076-001	PILOT LAMP	KS-FX460R	
	PL603	QLL0076-001	PILOT LAMP	KS-FX460R	
	PL603	QLL0092-001	PILOT LAMP	KS-FX463R	
	R 601	NRSA02J-561X	MG RESISTOR		
	R 602	NRSA02J-821X	MG RESISTOR		
	R 603	NRSA02J-122X	MG RESISTOR		
	R 604	NRSA02J-182X	MG RESISTOR		
	R 605	NRSA02J-272X	MG RESISTOR		
	R 606	NRSA02J-561X	MG RESISTOR		
	R 607	NRSA02J-821X	MG RESISTOR		
	R 608	NRSA02J-122X	MG RESISTOR		
	R 609	NRSA02J-182X	MG RESISTOR		
	R 610	NRSA02J-272X	MG RESISTOR		
	R 611	NRSA02J-392X	MG RESISTOR		
	R 612	NRSA02J-561X	MG RESISTOR		
	R 613	NRSA02J-821X	MG RESISTOR		






△	Item	Parts number	Parts name	Remarks	Area
	R 614	NRSA02J-122X	MG RESISTOR		
	R 615	NRSA02J-182X	MG RESISTOR		
	R 616	NRSA02J-272X	MG RESISTOR		
	R 617	NRSA02J-392X	MG RESISTOR		
	R 621	NRSA02J-332X	MG RESISTOR		
	R 622	NRSA02J-332X	MG RESISTOR		
	R 623	NRSA02J-332X	MG RESISTOR		
	R 632	NRSA02J-821X	MG RESISTOR		
	R 633	NRSA02J-821X	MG RESISTOR		
	R 640	NRSA02J-331X	MG RESISTOR		
	R 641	NRSA02J-331X	MG RESISTOR		
	R 642	NRSA02J-821X	MG RESISTOR		
	R 644	NRSA02J-821X	MG RESISTOR		
	R 646	NRSA02J-821X	MG RESISTOR		
	R 648	NRSA02J-821X	MG RESISTOR		
	R 650	NRSA02J-511X	MG RESISTOR		
	R 651	NRSA02J-511X	MG RESISTOR		
	R 661	NRSA02J-152X	MG RESISTOR		
	R 662	NRSA02J-473X	MG RESISTOR		
	R 663	NRSA02J-154X	MG RESISTOR		
	S 601	NSW0066-001X	TACT SWITCH		
	S 602	NSW0066-001X	TACT SWITCH		
	S 603	NSW0066-001X	TACT SWITCH		
	S 604	NSW0066-001X	TACT SWITCH		
	S 605	NSW0066-001X	TACT SWITCH		
	S 606	NSW0066-001X	TACT SWITCH		
	S 607	NSW0066-001X	TACT SWITCH		
	S 608	NSW0066-001X	TACT SWITCH		
	S 609	NSW0066-001X	TACT SWITCH		
	S 610	NSW0066-001X	TACT SWITCH		
	S 611	NSW0066-001X	TACT SWITCH		
	S 612	NSW0066-001X	TACT SWITCH		
	S 613	NSW0066-001X	TACT SWITCH		
	S 614	NSW0066-001X	TACT SWITCH		
	S 615	NSW0066-001X	TACT SWITCH		
	S 616	NSW0066-001X	TACT SWITCH		
	S 617	NSW0066-001X	TACT SWITCH		
	S 618	NSW0066-001X	TACT SWITCH		
	S 619	NSW0066-001X	TACT SWITCH		
	S 620	NSW0066-001X	TACT SWITCH		

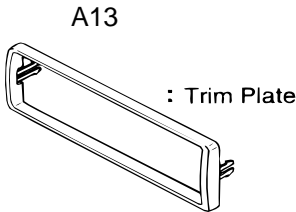
Packing materials and accessories parts list

Block No. M 3 M M
Block No. M 4 M M



SCREW KIT

- | | | | |
|---|---------------|---|-----------|
|  | A5 Plug Nut |  | A8 Washer |
|  | A6 Mount Bolt |  | A9 Hook |
|  | A7 Lock Nut | | |



■ Parts list(Packing)

Block No. M3MM

△	Item	Parts number	Parts name	Q'ty	Description	Area
	P 1	FSPG4002-001	POLY BAG	2	INST.BOOK	
	P 2	GE30123-025A	PACKING CASE	1	KS-FX460R	
		GE30123-026A	PACKING CASE	1	KS-FX463R	
	P 3	FSPH1018-002	PAPER CUSHION	2	LEFT/RIGHT SIDE	
	P 4	QPC03004315P	POLY BAG	1		
	P 5	QPA00801205	POLY BAG	1	W.CARD	

■ Parts list(Accessories)

Block No. M4MM

△	Item	Parts number	Parts name	Q'ty	Description	Area
	A 1	GET0039-001A	INST.BOOK	1	ENG FRE GER DUT	
	A 2	GET0039-002A	INST.BOOK	1	SPA ITA SWE FIN	
	A 3	GET0039-003A	INSTALL MANUAL	1	ENG FRE GER	
		GET0039-005A	INSTALL MANUAL	1	SWE FIN	
		GET0039-004A	INSTALL MANUAL	1	DUT SPA ITA	
	A 4	BT-54013-1	WARRANTY CARD	1		
	A 5	VKZ4027-202	PLUG NUT	1		
	A 6	VKH4871-001SS	MOUNT BOLT	1		
	A 7	VKZ4328-001	LOCK NUT	1	FOR M5	
	A 8	WNS5000Z	WASHER	1		
	A 9	FSKL4010-002	HOOK	2		
	A 10	FSJB3002-30C	HARD CASE	1		
	A 11	QAM0175-001	POWER CORD	1		
	A 12	FSKM2004-202	MOUNTING SLEEVE	1		
	A 13	FSJD2034-001	TRIM PLATE	1		
	A 14	LV40978-001A	CAUTION SHEET	1		
	K I T	KDGS717K-SCREW1	SCREW PARTS KIT	1	A5-A9	